

# A new species of spider of the genus *Plator* Simon (Family: Platoridae) from India<sup>1</sup>

B. K. TIKADER AND U. A. GAJBE

Zoological Survey of India, Western Regional Station, Poona 411 005  
(With four text-figures)

The spiders of the family Platoridae are little known from India. The first species of the genus *Plator* Simon was described from India by Simon (1897) and a second species was described by Tikader (1969). Subsequently two more species were recently described by Tikader & Gajbe (1973, 1975).

While examining the spider collection from High Altitude Zoology Field Station, Zoological Survey of India, Solan, H.P., India, we came across a new species of spider of the genus *Plator*, which is described here. It is the fifth species of the genus *Plator* from India.

The type specimen will in due course be deposited in the National Zoological Collection, Zoological Survey of India, Calcutta.

## *Plator solanensis* sp. nov.

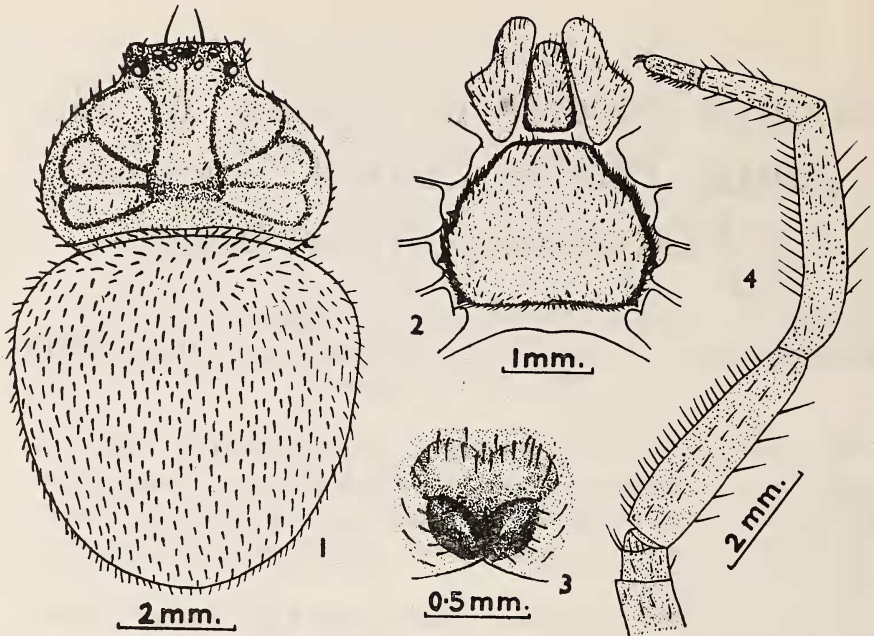
*General*: Cephalothorax and legs reddish brown, abdomen dirty chalk white. Total length 9.00 mm. Carapace 3.10 mm long, 4.80 mm wide; abdomen 5.80 mm long, 5.60 mm wide.

*Cephalothorax*: Very flat, leaf-like, much wider than long, cephalic region narrow and slightly high, clothed with black short spines. Eyes eight, in two rows, posterior row recurved but anterior row very little recurved. Posterior lateral eyes larger and black but posterior medians smaller and pearly white, bases of eyes encircled by black patch except posterior medians. Labium longer than wide as in text-figure 2. Sternum wider than long, slightly narrow in front, clothed with fine hairs. Legs long and strong, clothed with hairs and spines. Legs I shorter than the rest, II longest, anterior two legs armed with conspicuous erect spiniform bristles as in text-figure 4. Tarsus without scopulae or unguis tufts.

*Abdomen*: Very flat, leaf-like, nearly round or oval and slightly

---

<sup>1</sup> Accepted April 1975.



Figs. 1-4. *Plator solanensis* sp. nov.

1. Dorsal view of female, legs omitted; 2. Maxillae and labium; 3. Epigyne; 4. First leg of female.

longer than wide; clothed with fine hairs. Dorsally provided with irregular small markings as in text-figure 1. Ventral side slightly lighter than dorsal and clothed with fine hairs. Epigyne as in text-figure 3.

*Holotype* female, *paratype* one female in spirit.

*Type-locality*: Kasauli, Dist. Solan, Himachal Pradesh, India. Coll. H. P. Agrawal, 22-xii-1972, *paratype*: Tikkar Sarahan, Dist. Sirmour, Himachal Pradesh, India. Coll. H. P. Agrawal, 27-ix-1973.

This species appears to be related to *Plator himalayensis* Tikader & Gajbe, but it is separated as follows: (i) Anterior row of eyes very slightly recurved but in *Plator himalayensis* anterior row of eyes straight. (ii) Posterior median eyes without stalk like structure but in *Plator himalayensis* posterior median eyes with stalk like structure. (iii) Abdomen very slightly longer than wide with white markings but in *Plator himalayensis* abdomen wider than long with irregular minute markings of muscular corrugation and three transverse muscular depressions. (iv) Epigyne also structurally different.

#### ACKNOWLEDGEMENT

We are thankful to Dr. Arun Kumar, Zoologist, Zoological Survey of India, High Altitude Zoology Field Station, Solan, for supplying the spider collection for our study.

## REFERENCES

- SIMON, E. (1897): *Materiaux pour servir à la faune drachnologique de l'Asie Méridionale. V. (1) Arachnides recueillis a Dehra-Dun (N.W. Prov.) et dans le Dekka par M.A. Smythies. Mem. Soc. Zool. France, 10, 256.*
- TIKADER, B. K. (1969): *Studies on some rare spiders of the families Selenopidae and Platoridae from India. Proc. Indian Acad. Sci., 69(5):252.*
- , & GAJBE, U. A. (1973): *A new species of spider of genus Plator Simon (Family - Platoridae) from India. Curr. Sci., 42(23):829.*